



UnityPoint Health
Grinnell Regional
Medical Center Foundation

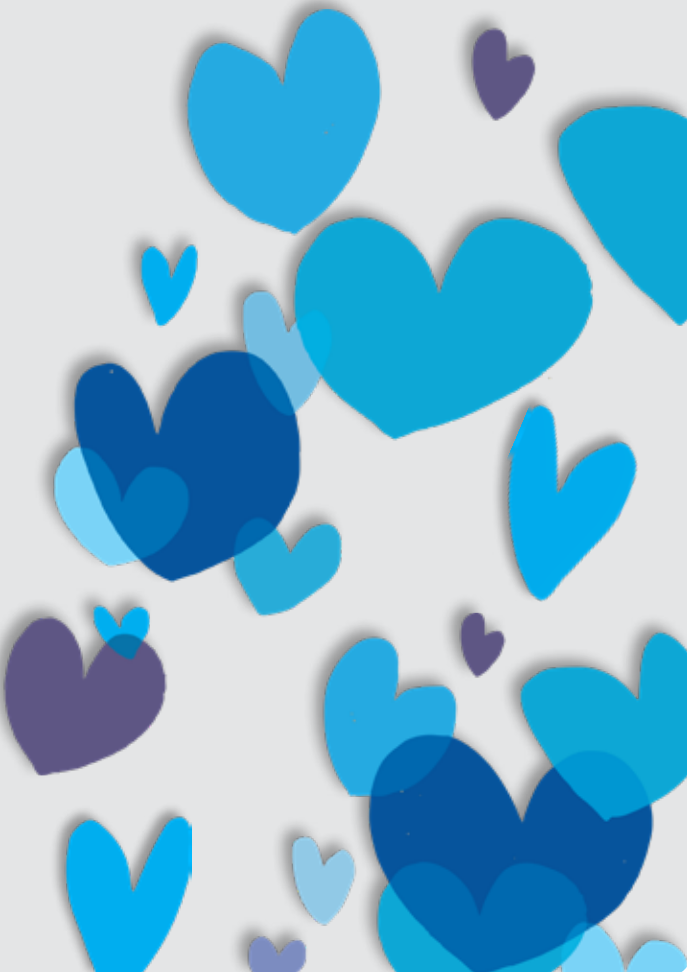
GRMC IN FOCUS

Your support of GRMC has had an amazing impact on our patients and the communities we serve.

From the purchase of new equipment and technology to specialized training for team members to enhancing and expanding services, philanthropy has made a difference throughout GRMC. **As always, 100% of every donation to the GRMC Foundation remains right here to continue making a difference for our patients, their families, and our team members.**

At this time of year, many people like you are thinking about where to spend their philanthropic dollars. I hope you will consider continuing your support of your not-for-profit regional hospital which is here to care for you and your loved ones every day of the year.

If this is the right time for you to make a gift, please use the enclosed postage-paid envelope for your convenience or scan the QR code to make a gift online.



In this issue...

Philanthropic Impact

- Grant from Grinnell Mutual to Enhance Patient Safety
- Radiofrequency Generator
- GRMC Receives Center of Excellence Grant for 2025-2026
- Your Plan, Your Legacy

Hospital News

- GRMC's New Mammography Machine
- Iowa Public Radio Visits GRMC
- New Providers

I would like to start this letter with a special shout out to the donors who are also GRMC team members.

To those of you reading this who are not employed by UnityPoint Health - Grinnell, you may not be aware that every year in September the GRMC Foundation holds a Team Giving Campaign. We try to make it fun and interactive while keeping the focus on the impact team members make every day - and how they enhance that impact when they donate to the GRMC Foundation.

Our team members are on the frontlines of health care for this region and many of them care enough to give more than their expertise and compassionate care. Just like all the donors in the communities GRMC serves, they donate because they want to make a difference.

The theme for our Team Giving Campaign is *Your Passion, Our Purpose* and I think this theme encompasses all our donors. Through your donation you support what matters to you - your passion. From hospice to bike helmets for third graders, from specific projects and programs to our general use fund, the support you give fuels GRMC's ability to fulfill its purpose: to improve the health of the people and communities we serve.

Thank you for supporting what matters to you. *Thank you for making a difference at GRMC.*



Donna Fischer

Donna Fischer
Director of Development

For more information or to opt-out of future newsletters, call (641) 236-2079 or email donna.fischer@unitypoint.org.

ONE HUNDRED PERCENT of every dollar donated to the GRMC Foundation stays local to benefit the healthcare programs and needs in the GRMC service area. For more information and to make a gift, visit www.unitypoint.org/grinnell/foundation.

YOU MATTER TO US AND TO YOUR WORLD.



UnityPoint Health
Grinnell Regional
Medical Center Foundation

PHILANTHROPIC IMPACT

GRANT FROM GRINNELL MUTUAL TO ENHANCE PATIENT SAFETY

Grinnell Mutual Group Foundation has provided a \$50,000 grant to support GRMC's efforts to enhance the safe patient care environment in the emergency department (ED) for patients at risk of self-harm or aggressive behavior. With this grant, GRMC will begin the modifications necessary to redesign the patient bathroom in the ED and a patient treatment room with features focused on the safety of our patients and our care team.



(Pictured are Jeff Menary, president, Grinnell Mutual Group Foundation, and Donna Fischer, director of development, GRMC Foundation.)

RADIOFREQUENCY GENERATOR

Because of your support, the GRMC Foundation was able to help the operating room and Pain Clinic, purchase a new radiofrequency generator (pictured atop its cart). This medical device is used in radiofrequency ablation, a minimally invasive procedure where heat generated by radiofrequency energy is used to destroy or ablate (disable) nerves causing chronic pain.

"Thank you, donors, for the radiofrequency generator!" shares GRMC's Pain Clinic staff.



GRMC RECEIVES CENTER OF EXCELLENCE GRANT FOR 2025-2026

GRMC was again awarded the Center of Excellence (CoE) Grant by the Iowa Department of Health and Human Services, securing \$212,500 in funding for the 2025-2026 program year. The grant supports GRMC's ongoing commitment to providing high quality maternal care in rural Iowa. In the 2024-2025 program year, the funding helped expand perinatal mental health services via telehealth, supported maternal health outreach in Marshalltown, and strengthened postpartum care for families across our region. Funds from this grant also support the expansion and renovation of the hospital's obstetrics unit.



YOUR PLAN, YOUR LEGACY

As we enter the fourth quarter of the year, many donors are considering their options for making a gift before the end of 2025. One such option is through a Qualified Charitable Distribution (QCD) from an IRA. Making a QCD from your IRA before the end of the year offers significant tax advantages, especially if you are over age 70½. Primarily, a QCD can satisfy your Required Minimum Distribution (RMD) without adding to your adjusted gross income. And, by making a QCD - which goes directly to the charitable organization - the donation is tax free so 100% of the money goes to the charity. But because timing is critical, be aware of the processing time required so the charitable organization can receive your gift before 12/31/2025.

Questions? Contact Donna Fischer at donna.fischer@unitypoint.org or (641) 236-2079.



HOSPITAL NEWS

GRMC'S NEW MAMMOGRAPHY MACHINE

Recently, GRMC installed a Fuji Aspire Cristalle machine that offers several significant upgrades over the previous model, providing advanced features that enhance patient comfort and improve diagnostic accuracy. The machine includes comfort paddles, which distribute compression more evenly, reducing discomfort during screenings. In addition, the machine shortens the time spent in compression and lowers radiation exposure, ensuring a safer and more pleasant experience for patients. It is expected to serve more than 2,000 patients annually while improving the hospital's screening capacity and helping to reduce appointment backlogs. Grinnell mammography technologists have received specialized training from Fuji application specialists to ensure the highest level of care.



(Pictured with the new mammography machine are (L-R) Regina Eiben, RT; Amber Hanson, RT; and Kathy McNulty, RT.)

IOWA PUBLIC RADIO VISITS GRMC

Recently, Iowa Public Radio came to GRMC seeking information about healthcare challenges facing rural hospitals and clinics. David-Paul Cavazos, GRMC's rural president, was interviewed and spoke about rural healthcare gaps and how UnityPoint Health - Grinnell is meeting those challenges. Additionally, Cherish Hansen, obstetrics (OB) unit manager, gave the interviewer a tour of the construction begun to expand our obstetrics unit.



NEW PROVIDERS

Brenda Goodner, ARNP, has joined our Manatt Family Walk-In Clinic team. She received her undergraduate degree at Upper Iowa University followed by an advanced registered nurse practitioner (ARNP) degree from Allen College. She transferred to Grinnell from UnityPoint Health - Fort Dodge where she was practicing acute care in a primary care environment.



Kyle Grover, MD, is a Family Practice physician and started his full-time practice at UPH - Grinnell Family Practice Clinic on August 25. He is also working as needed in the Manatt Family Walk-In Clinic and as a Hospitalist. He earned his degree from University of Iowa Carver College of Medicine and completed the UnityPoint Lutheran Family Medicine Residency program where he was the Chief Resident for the 2024-2025 program year.



Lisa Vigue, MD, FACOG, joined the UnityPoint Health - Grinnell OBGYN Clinic team in June. She covers C-sections and OB services one weekend per month. She received her medical degree from Creighton University School of Medicine while completing her residency at Penn State University.

